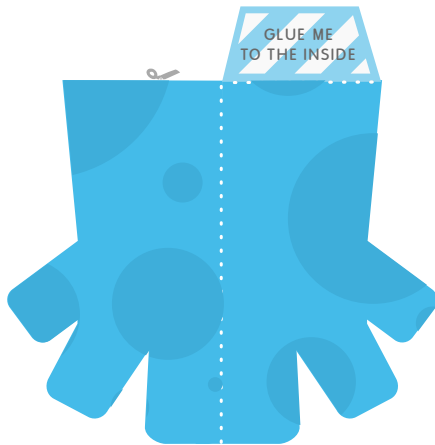


Inside facing Outside facing

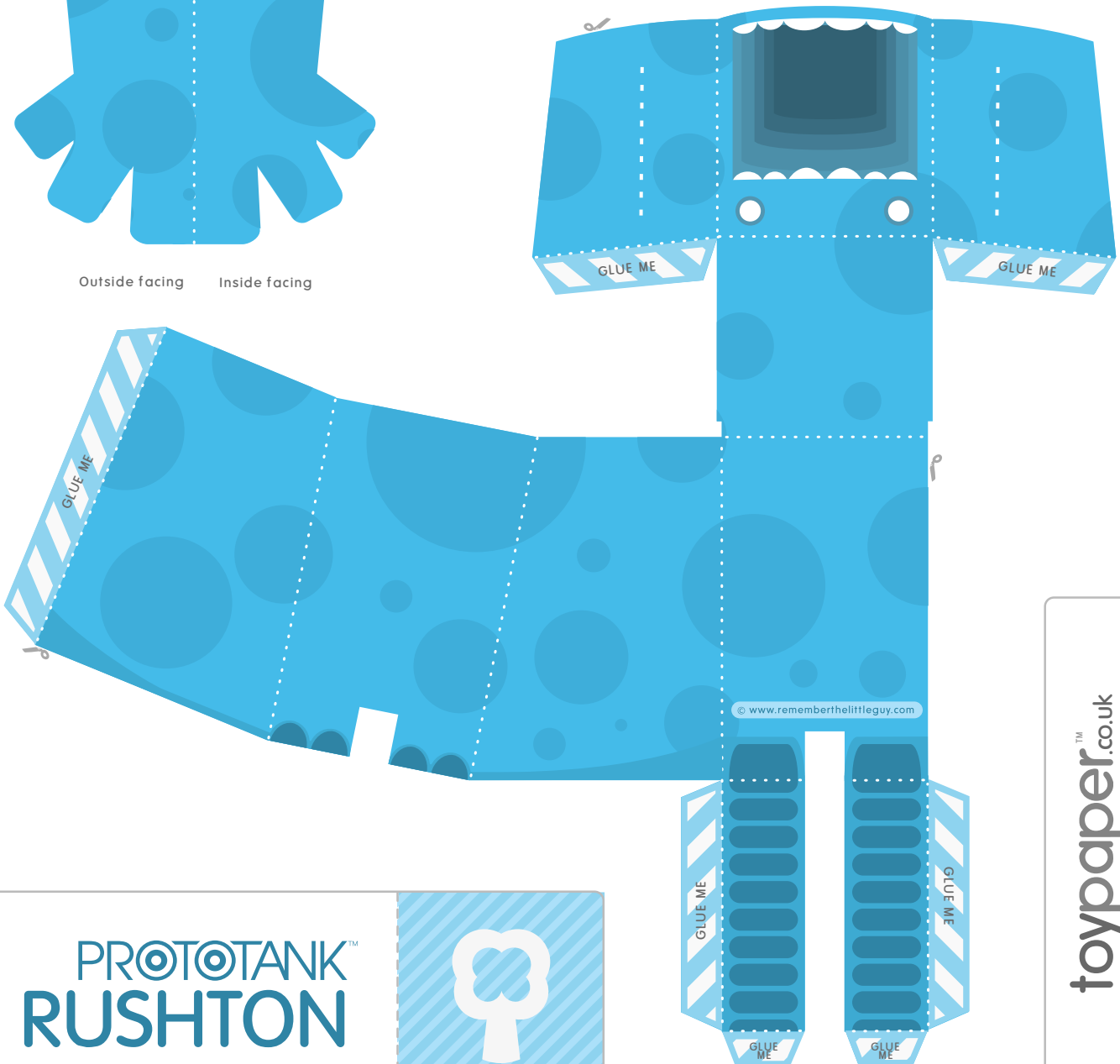
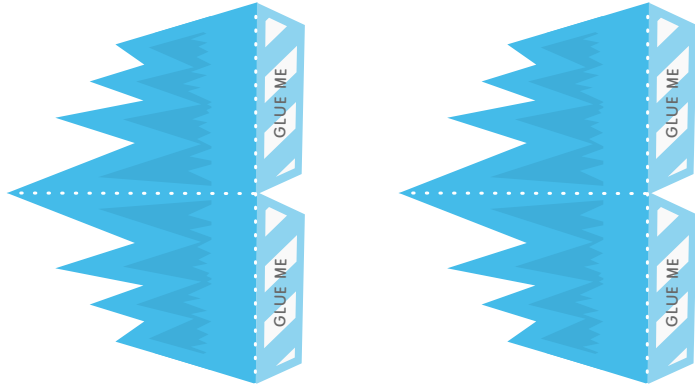


Outside facing Inside facing

Add the arms by folding down the center line add some glue and press together (creating a double-sided piece) and attaching to the main body.

Add glue to the tabs then hook on to either side of the model, firmly fixing to the inside.

Below are the hairy ears. Cut them out in exactly the same way as the arms and fold to create a double-sided piece. Cut two slits where indicated on the side of the head then push each piece through, fanning out the two tabs inside the head. When you are happy, fix in place with some glue.



© www.rememberthelittleguy.com

toypaper™.co.uk

Designed by www.rememberthelittleguy.com

PROTOTANK™
RUSHTON



IMPORTANT

FOLD
CUT - - - - -

Read any special instructions before cutting. Please take care when using sharp items. Score dotted lines and cut dashed lines. loosely assemble before applying glue.

PROTOTANK :: RUSHTON
LOVES TO RUN WITH THE WIND IN HIS EARS
DIFFICULTY: MEDIUM :: TIME: 25m