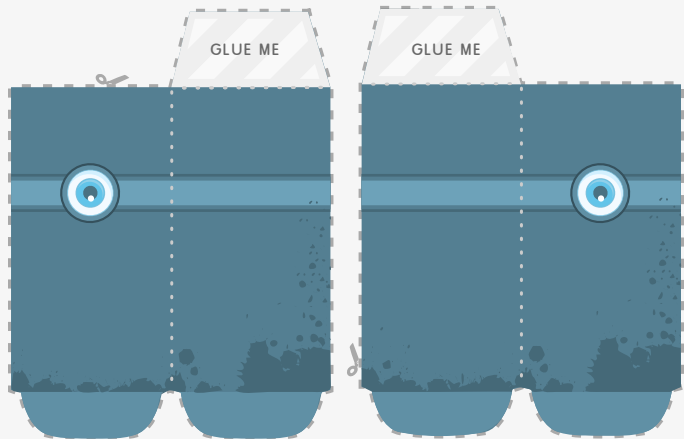
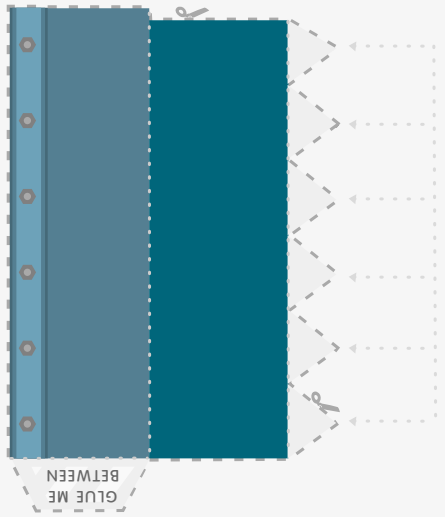


Add the arms by folding down the center line add some glue and press together (creating a double-sided piece) and attaching to the main body.

Add glue to the tabs then hook on to either side of the model, firmly fixing to the inside.

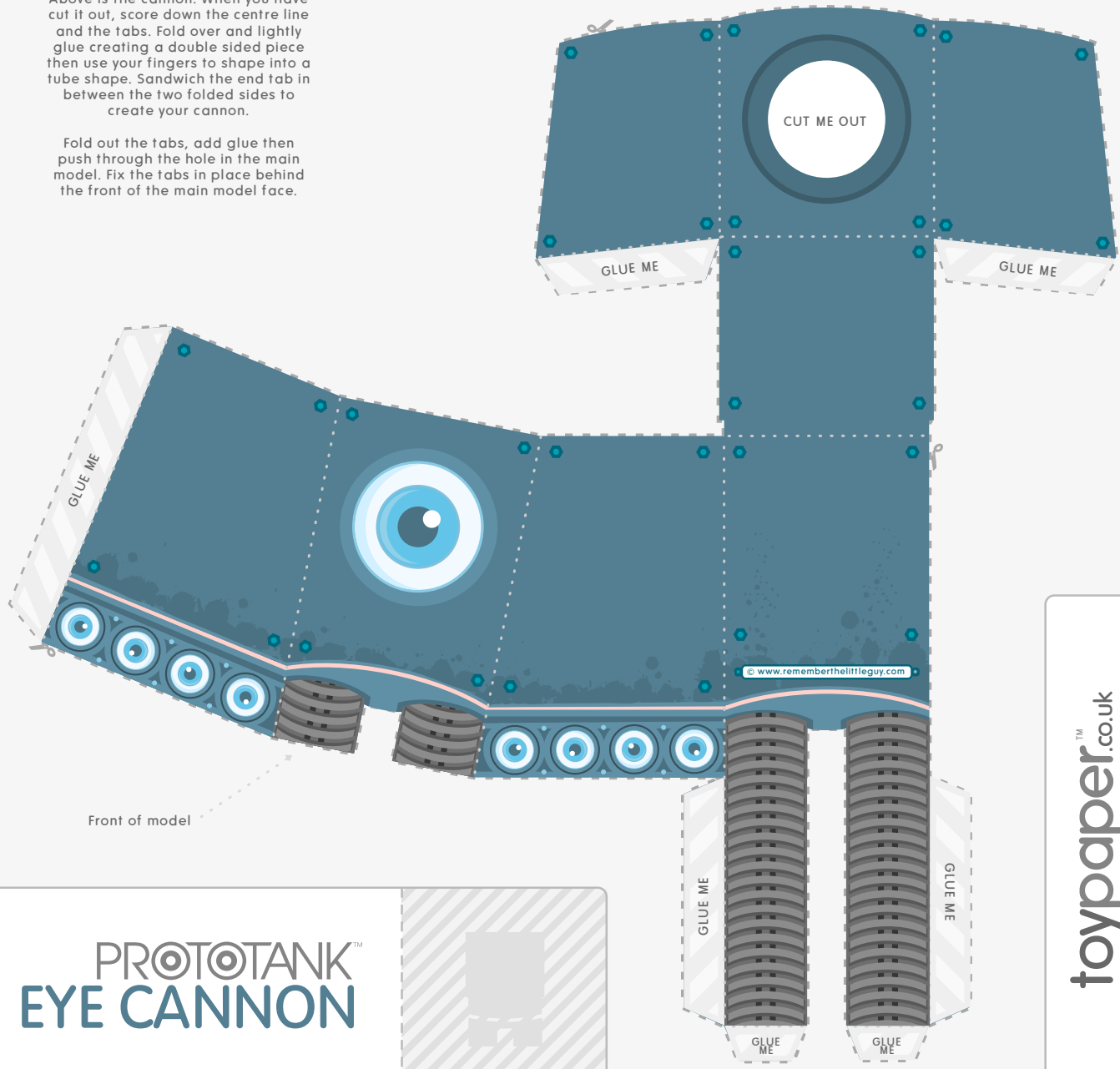


Outside facing Inside facing Inside facing Outside facing

Above is the cannon. When you have cut it out, score down the centre line and the tabs. Fold over and lightly glue creating a double sided piece then use your fingers to shape into a tube shape. Sandwich the end tab in between the two folded sides to create your cannon.

Fold out the tabs, add glue then push through the hole in the main model. Fix the tabs in place behind the front of the main model face.

Face of model



Front of model

PROTOTANK™ EYE CANNON



toypaper.co.uk
Designed by www.rememberthelittleguy.com

IMPORTANT

FOLD
CUT - - - - -

Read any special instructions before cutting. Please take care when using sharp items. Score dotted lines and cut dashed lines. loosely assemble before applying glue.

PROTOTANK :: EYE CANNON
HE IS ALL EYES SO WATCH YOUR BACK
DIFFICULTY: MEDIUM :: TIME: 25m