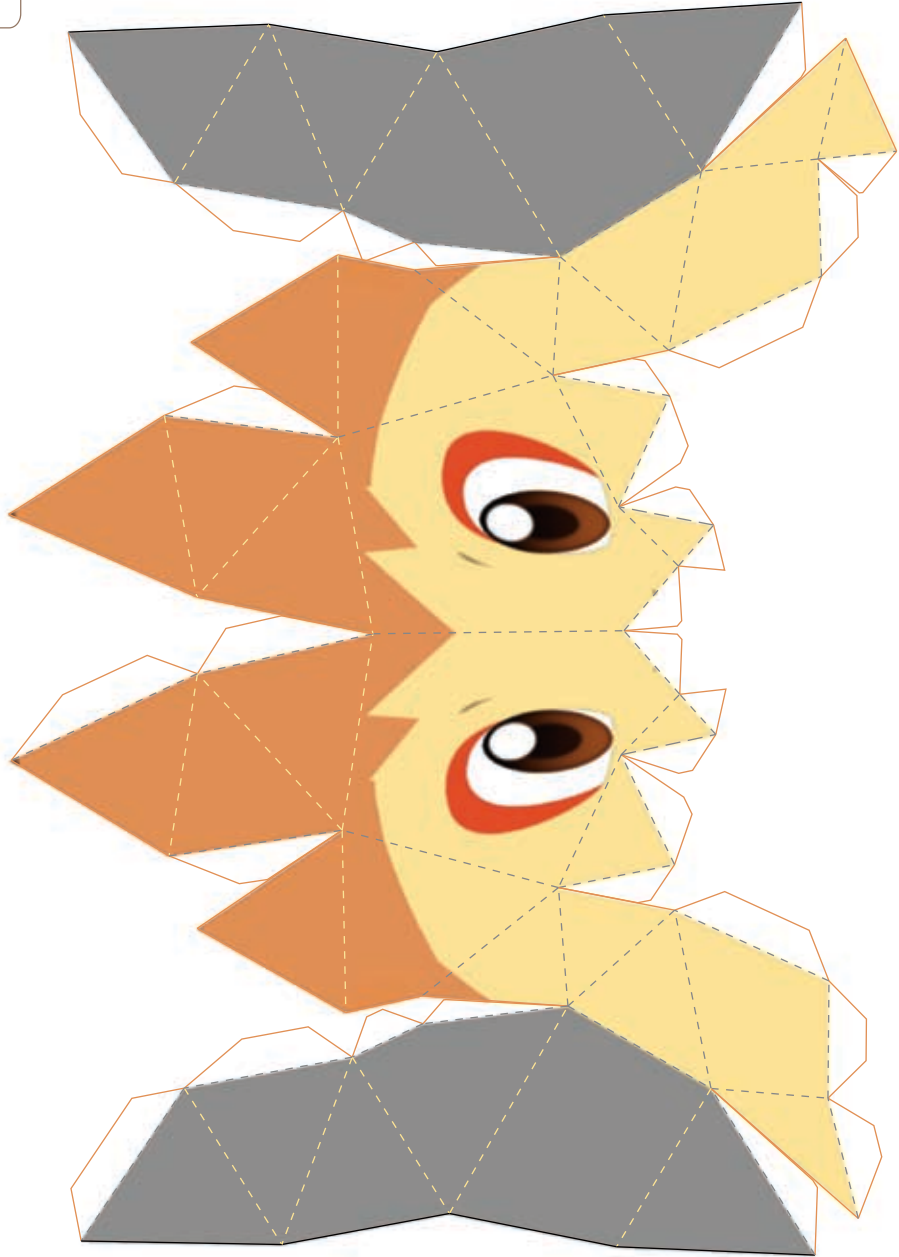


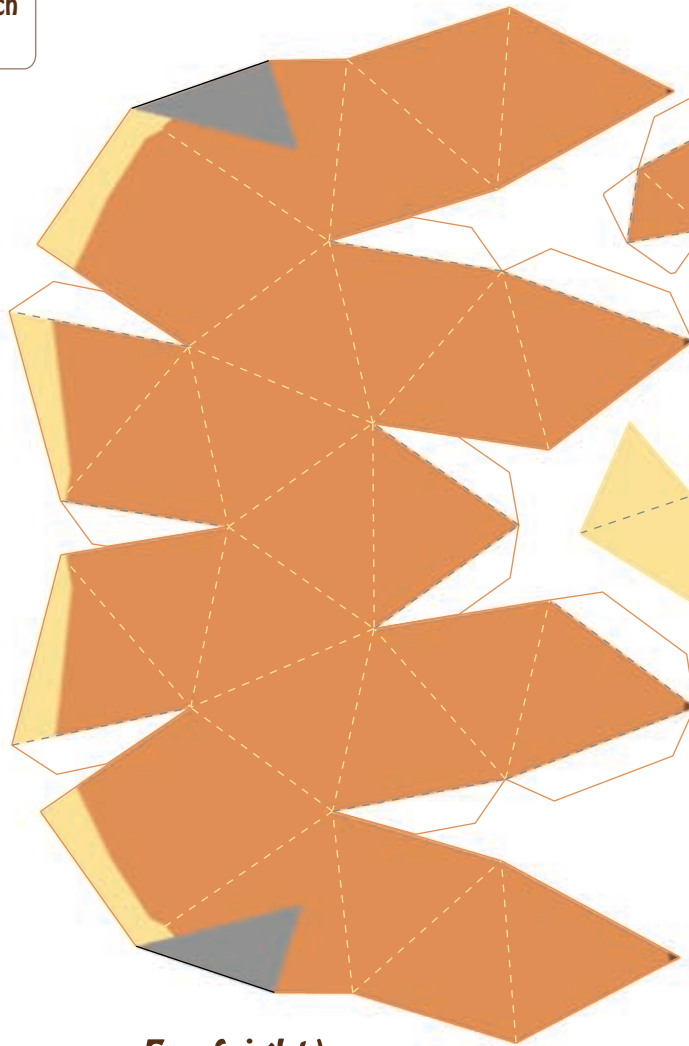
- Cut here.
- - - - - Inward fold
- · - · - Outward fold
- White area Glued area
- Gray area Glue and attach at the end.

Face

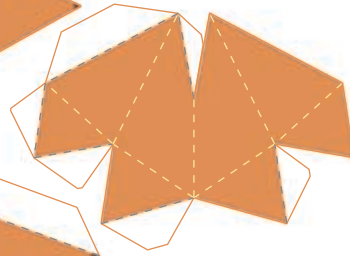


—————	Cut here.
- - - - -	Inward fold
· · · · ·	Outward fold
White area	Glued area
Gray area	Glue and attach at the end.

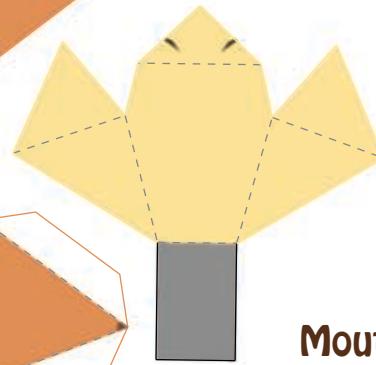
Head



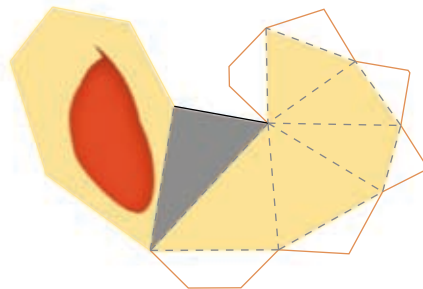
Point
(on top of head)



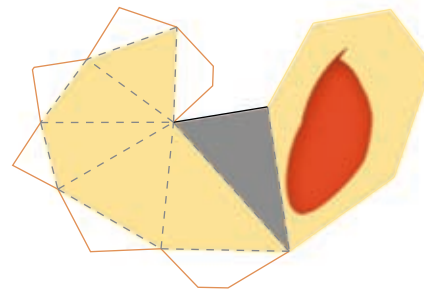
Mouth



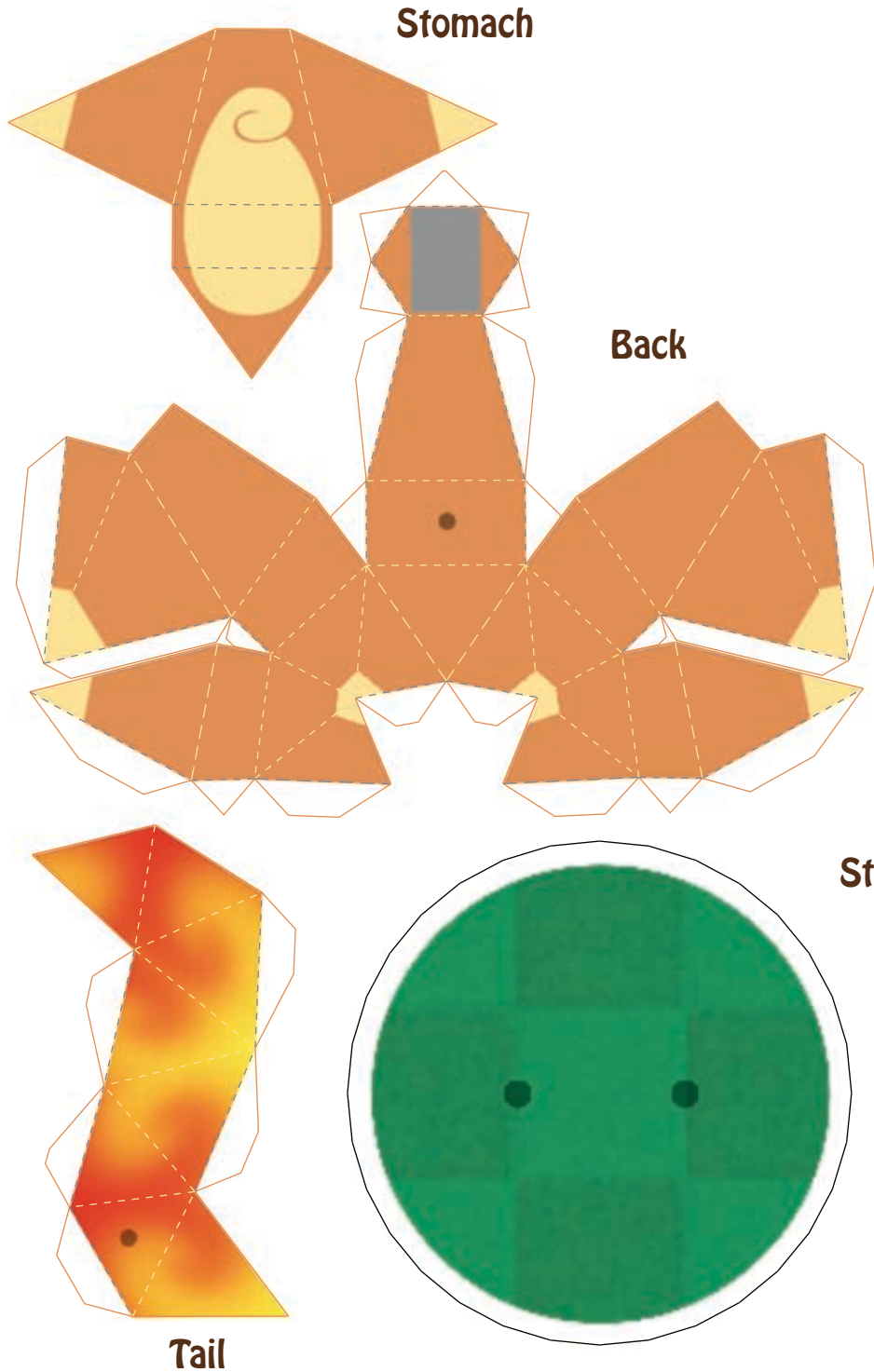
Ear (right)



Ear (left)



———— Cut here.
 - - - - - Inward fold
 · · · · · Outward fold
 White area Glued area
 Gray area Glue and attach at the end.



Assembly Tips

- Warning! Paper craft assembly requires the use of scissors. Small children should ask an adult for help.
- It will take approximately two hours to cut out and assemble the parts into a complete Chimchar.
- You'll need a pair of scissors to complete this craft. Small children should ask a parent or guardian for help.
- For best results, use a glue that dries quickly. Toothpicks can be useful for applying glue to small areas.
- Make sure to fold along all of the dotted lines before applying glue.
- When folding, it's easier to complete all of the outward folds before you complete the inward folds.
- When you need to apply glue, use only a small amount. Press firmly with your fingers, and give the glue time to dry.
- Assemble the pieces one at a time, and be very careful with each one. If you do, your completed Chimchar will look great!

Face and Mouth

To fold and glue the Face, it's easier to work from the eyes up, and then the center out. Before assembling the chin area, attach the Mouth to the Face starting at the nose and working outward to the Mouth. The gray rectangle should be glued last.

Ears

Fold and glue the Ears, ending with the side that has the Ear hole printed on it.

Back and Stomach

First, fold and glue the Back, starting with the Legs. Fold and glue the Stomach next, again starting with the Legs.

Tail and Point

Fold and glue the Tail and Point, leaving the triangles without white areas for the end.

Finishing Touches

Apply plenty of glue to the gray areas on Chimchar's Face, then attach the Head. Glue the Ears to the Head by applying glue to the gray areas (the Ear holes should be visible from the front). For the Point, make sure it is right-side up, then apply plenty of glue to the pointiest spot. Attach it to the Head and hold it until it dries. Make sure that the Tail is pointing upward, then glue the Tail to the Body by aligning the ● marks. Finally, put glue on the bottoms of Chimchar's feet, and attach them to the Stand at the ● marks.

