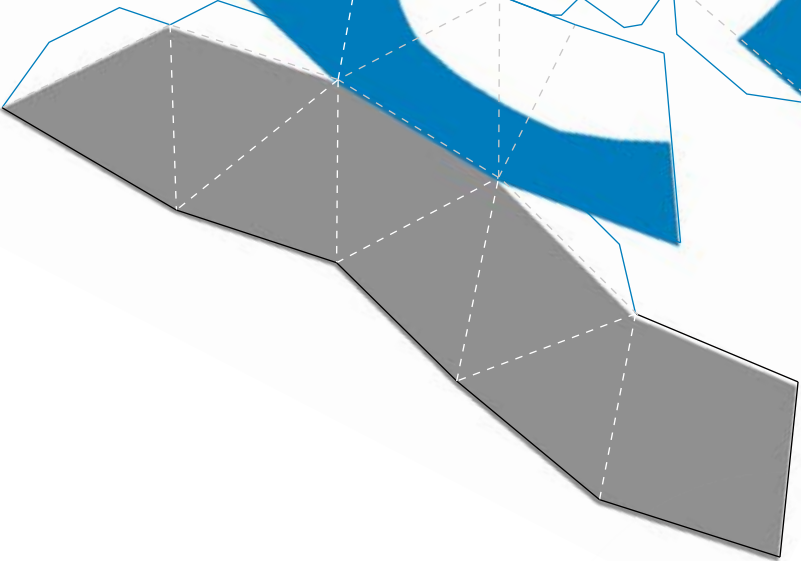
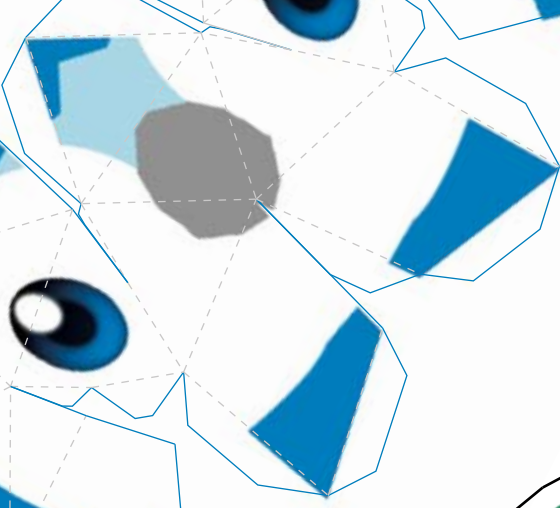
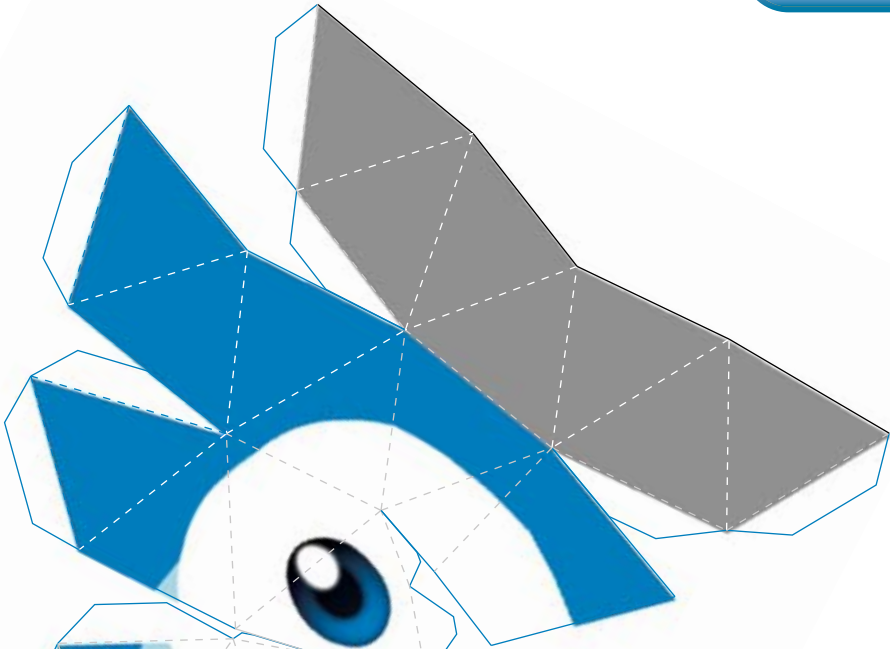




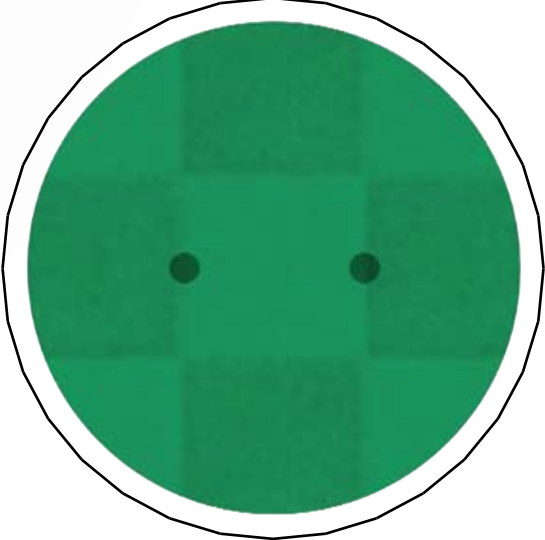
Piplup

— Cut here.  
- - - Inward fold  
- · - Outward fold  
White area Glued area  
Gray area Glue and attach at the end.

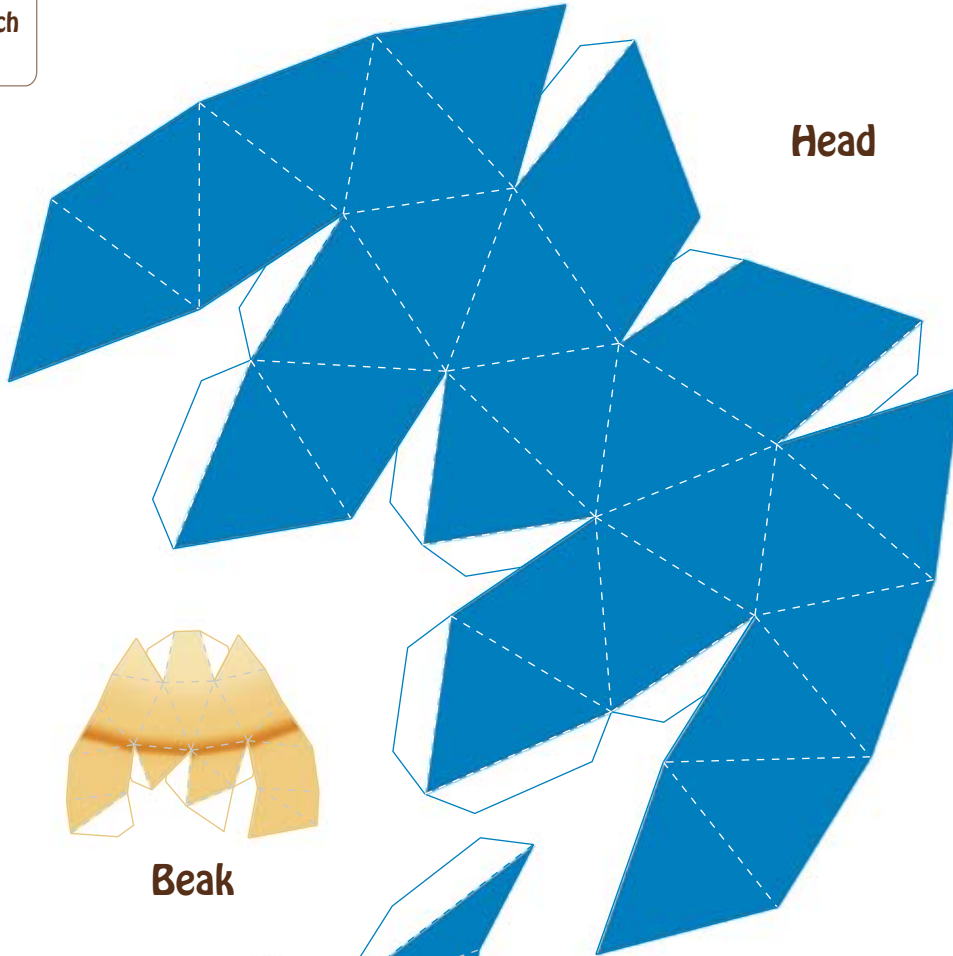
Face



Stand

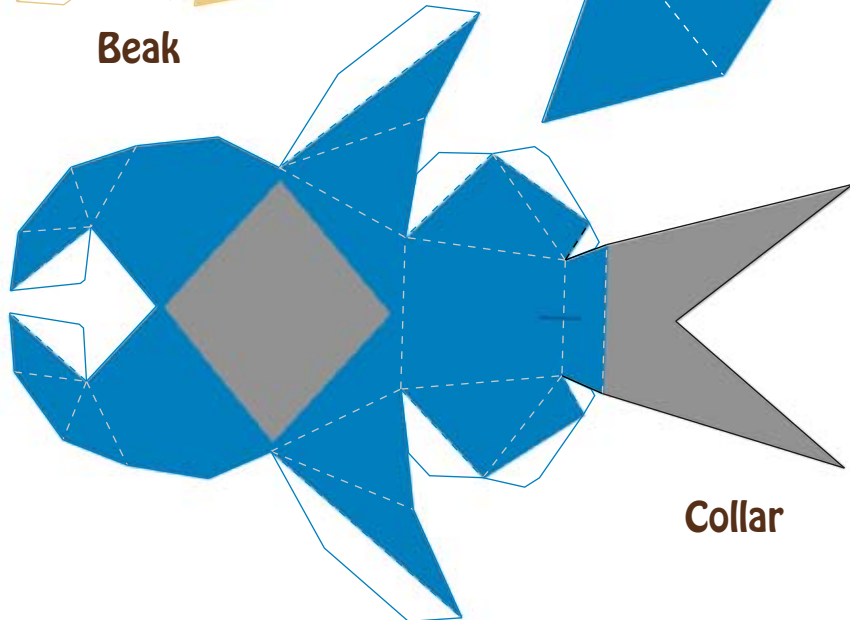


—————	Cut here.
- - - - -	Inward fold
· · · · ·	Outward fold
White area	Glued area
Gray area	Glue and attach at the end.



Head

Beak

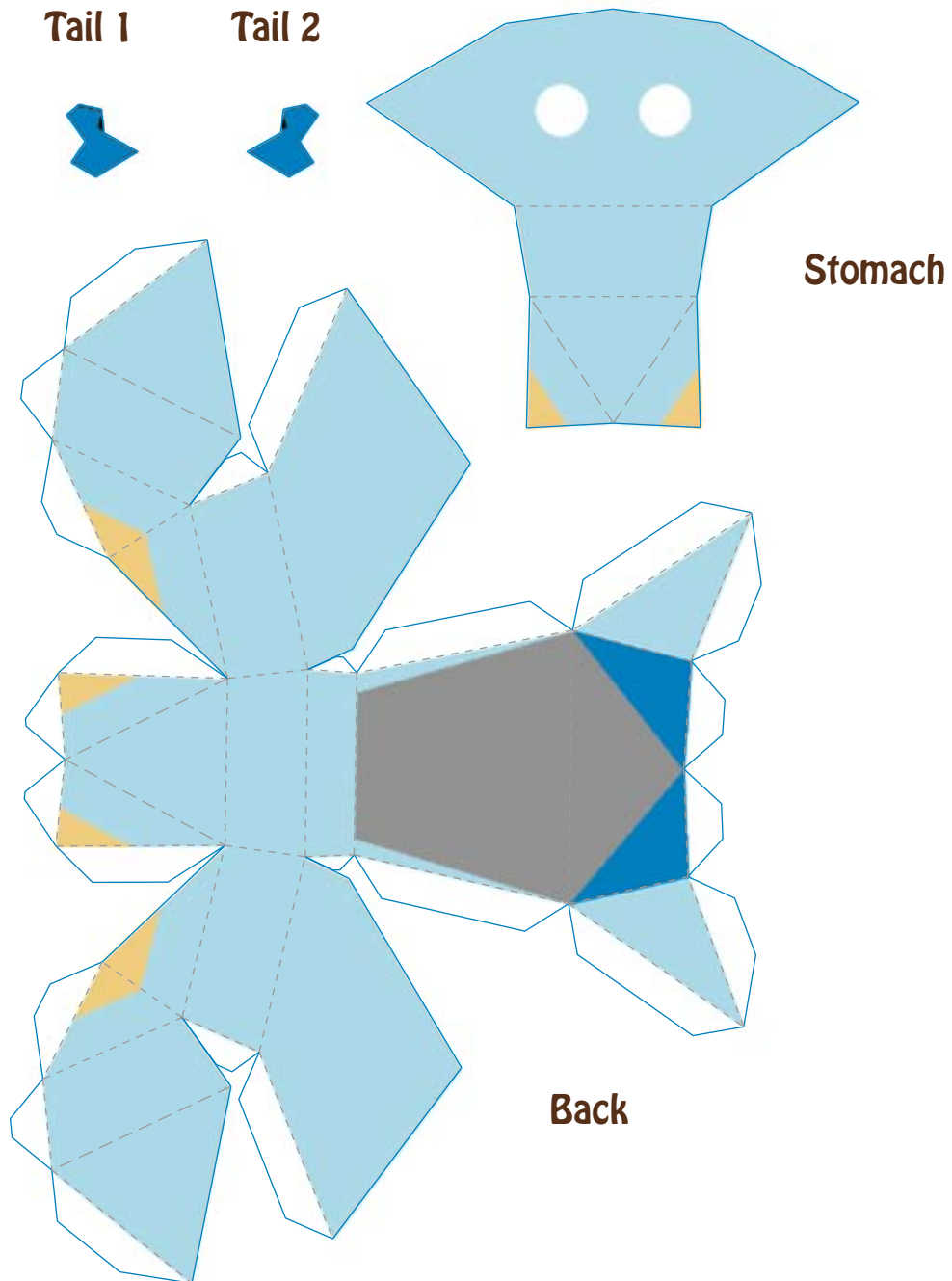


Collar



Piplup

— Cut here.  
- - - - - Inward fold  
- · - · - Outward fold  
White area Glued area  
Gray area Glue and attach at the end.



### Assembly Tips

- Warning! Paper craft assembly requires the use of scissors. Small children should ask an adult for help.
- It will take approximately two hours to cut out and assemble the parts into a complete Piplup.
- For best results, use a glue that dries quickly. Toothpicks can be useful for applying glue to small areas.
- Make sure to fold along all of the dotted lines before applying glue.
- When folding, it's easier to complete all of the outward folds before you complete the inward folds.
- When you need to apply glue, use only a small amount. Press firmly with your fingers, and give the glue time to dry.
- Assemble the pieces one at a time, and be very careful with each one. If you do, your completed Piplup will look great!

### Face, Head, Beak, and Collar

Fold and glue the Face, finishing the diamond-shaped gray area last. Since the Beak is very small, take your time in carefully assembling it.

### Back and Stomach

Begin with the Back, starting with the Legs. Attach the Stomach piece next, again starting with the Legs.

### Tail

Glue the two Tail pieces together.

### Finishing Touches

Apply plenty of glue to the gray areas on Piplup's Face, then attach the Head piece. When attaching the Face to the Head, be sure that the Head is not upside-down. Apply glue to the thickest part of the Beak and glue it to the gray area on the Face. Note that the Beak has a top and bottom. Look carefully at the shape of the gray mark on the Face to attach the Beak correctly. Apply glue to the widest part of the Tail, and glue it to the gray mark on the Collar piece. Make sure that the pointiest part of the Tail is facing outward. Finally, put glue on the bottoms of Piplup's feet, and attach them to the Stand at the ● marks.

