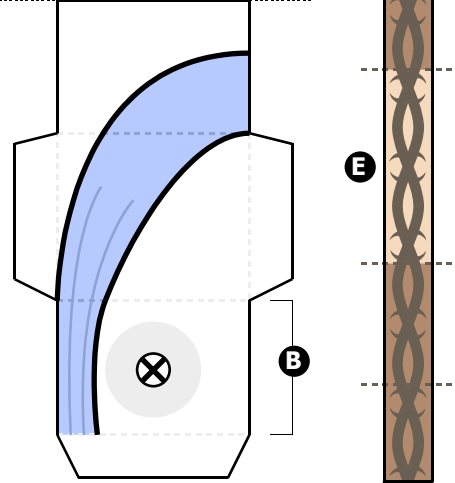
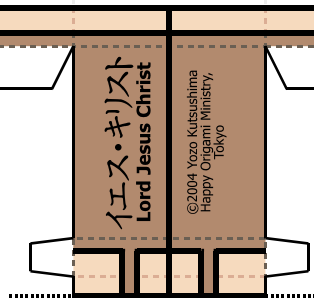
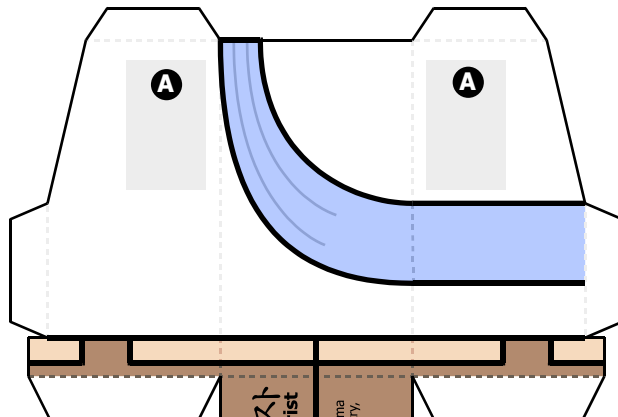
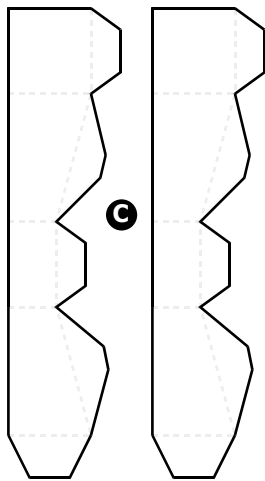
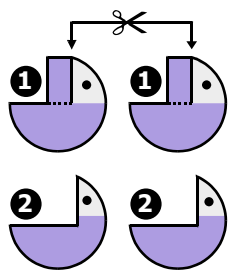
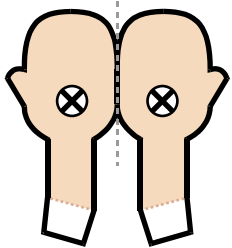
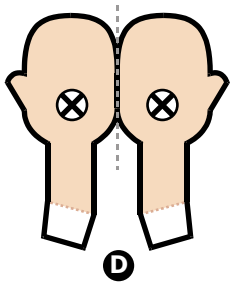
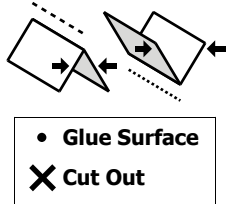
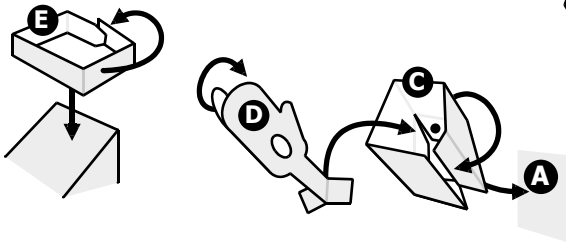
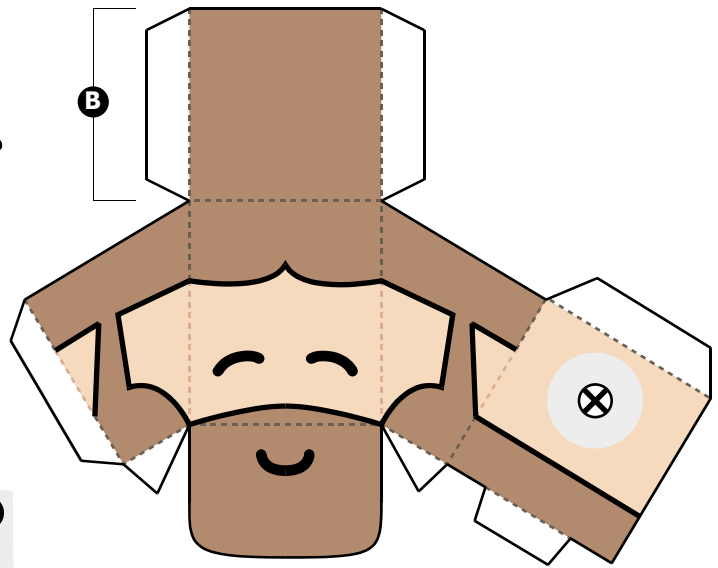


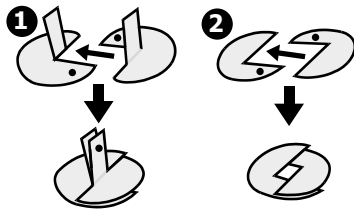
# Let's Build イエス・キリスト Lord Jesus Christ!

Designed by Mr. Kutsushima of Happy Origami Ministry, Tokyo



## ROTATING HEAD DETAILS

**IMPORTANT!** If you want rotating head, do not glue last panels (B) of head and body yet. You need access to inside.



After complete body and head (leave last panels unglued,) insert plongs of crasp (1) through hole in top body panel so plongs pointing up. Put head over plongs through hole in bottom of head. Put washer (2) over plongs in head. Apply glue to outside of plongs and press plongs flat against washer until they hold. Glue final panels into place.